

Installing FC Manager on your computer

Overview: This guide leads you through the steps to install the new software on your computer. For a *successful* installation, it is important that you follow the steps in order.

Note: This install file was verified on the following system versions:

- Windows 10 (32-bit and 64 bit)
- Windows 8 (32-bit and 64-bit)
- Windows 7 (32-bit and 64-bit)

Steps	Actions						
	Note: You do not need to attach the communicator for steps 1-6 below.						
Do you already have FC Manager installed on your computer?							
1.	Open FC Manager to view the version at the top of the window.						
2.	Leave FC Manager open while you check the following document to view the currently released version of the FC Manager Utility (It's the last line in the document). http://www.5150update.com/5150 Current Revisions.pdf <i>Note: If your version is not the same as the one in 5150 Current Revisions, you have to uninstall FC Manager before you can install the new one.</i>						
Check the version of your computer system							
3.	Do you have a 64-bit or 32-bit computer system? <table border="1"><thead><tr><th>If...</th><th>Then...</th></tr></thead><tbody><tr><td>You already know what version you have,</td><td>Begin at step 5.</td></tr><tr><td>You don't know what version you have,</td><td>Continue with step 4.</td></tr></tbody></table>	If...	Then...	You already know what version you have,	Begin at step 5.	You don't know what version you have,	Continue with step 4.
If...	Then...						
You already know what version you have,	Begin at step 5.						
You don't know what version you have,	Continue with step 4.						
4.	Click your version of Windows and follow the steps to determine if you have a 32-bit or 64-bit system. These links take you to the end of this document. <ul style="list-style-type: none">• Windows 10 (32-bit and 64 bit)• Windows 8 (32-bit and 64-bit)• Windows 7 (32-bit and 64-bit) Note: A link brings you back to step three (5) so you can continue installing the software.						

Steps Actions

Install the new FC Manager software

5. Click the correct link below to install the **FC Manager** software for your computer's system and follow the on-screen instructions.

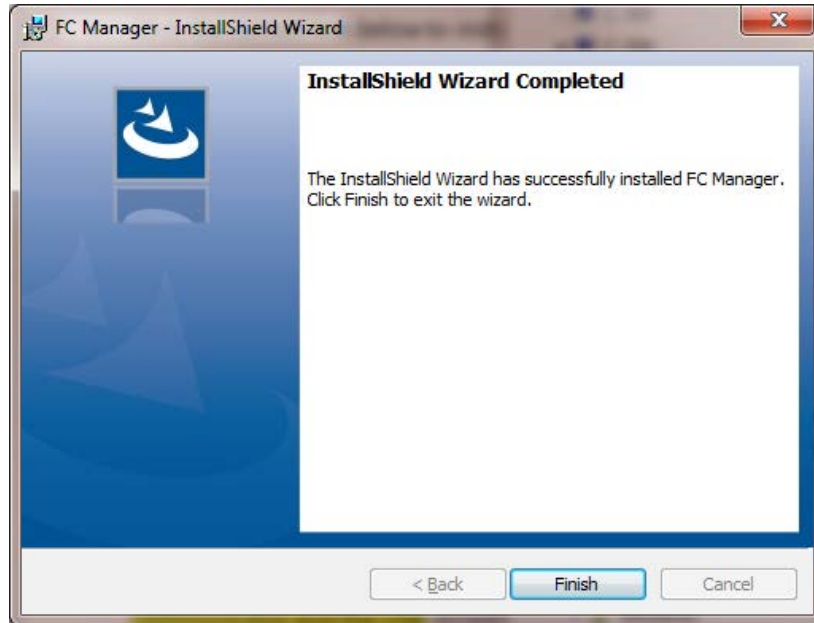
- <http://www.5150update.com/Fcm3.0WebSetup32.exe>
- <http://www.5150update.com/Fcm3.0WebSetup64.exe>

Note: This setup installs three items to your computer:

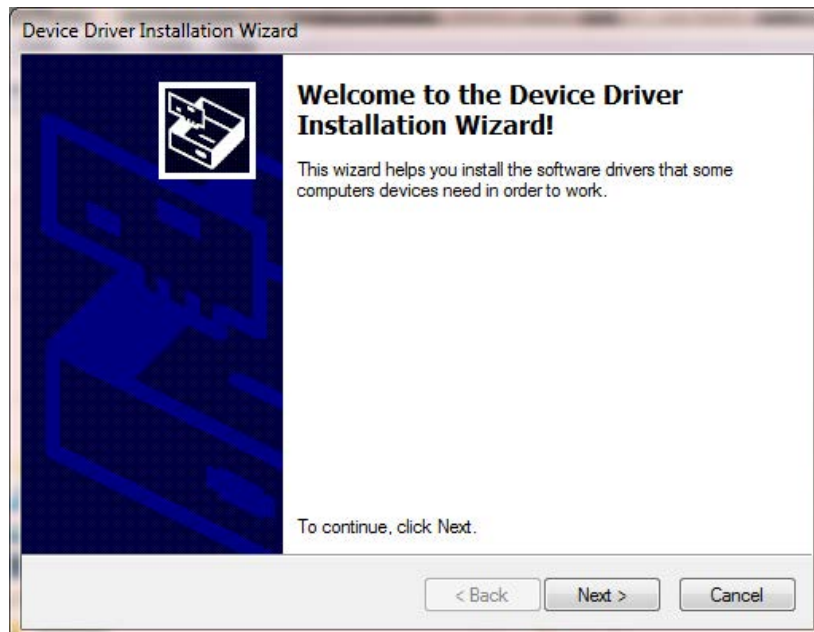
1. FC Manager application.
 2. .NET Framework 4.0.
 3. USB Drivers needed for the communicator.
-

Steps Actions

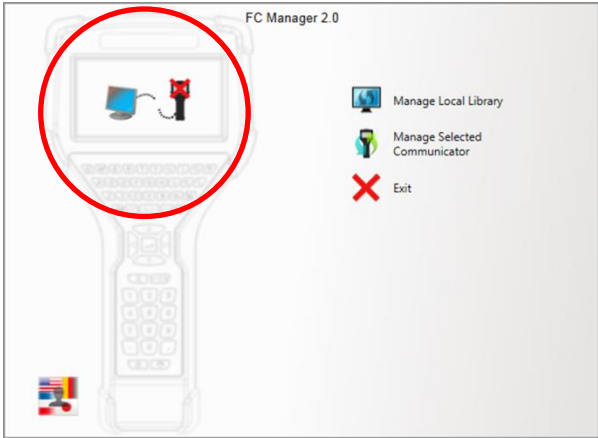
6. Don't try to close this window with the **Finish** button. Click it and it opens the **Device Driver Installation Shield Wizard** to install USB drivers—a second window.



When you see a **Finish** button, click it and both the **Device Driver** and **FC Manager** windows disappear.

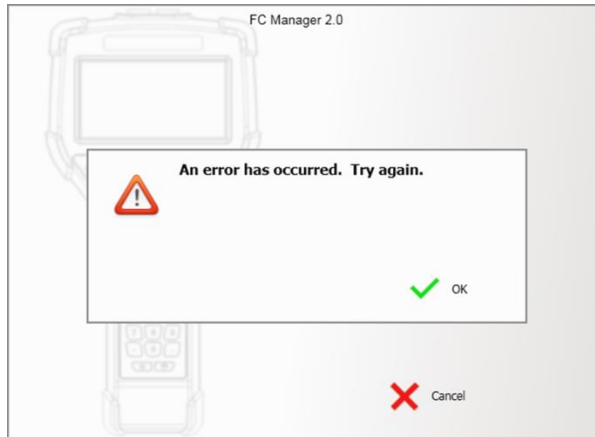


7. FC Manager should appear in your **Start** menu list of applications. Click it to open it.
8. Place the communicator in the charging cradle and verify it is turned on.
9. Verify the USB cable and AC power cord are connected to the charging cradle.

Steps	Actions
10.	If your FC Manager software does not connect to the communicator (see the red circle in the figure below), then you may need to install a communication driver for your 5150 communicator and the USB driver. (<i>a second time</i>) 
11.	Exit FC Manager.
Install product specific USB drivers on your computer	
12.	Exit the FC Manager window by clicking the Exit button.
13.	To install the product specific USB drivers on your computer, download by clicking one of these zip files: <ul style="list-style-type: none"><li data-bbox="321 1205 1052 1232">• http://www.5150update.com/USB_drivers_2.08.28_32bit.zip<li data-bbox="321 1245 1052 1272">• http://www.5150update.com/USB_drivers_2.08.28_64bit.zip
14.	Extract the files to a location on your computer, and then double-click dpinst.exe to open it from that location.
15.	Follow the on-screen instructions to complete the installation.
16.	Exit FC Manager and restart it.

Run this program as an administrator

17. If **FC Manager** displays An error has occurred. Try again. **message** after you selected the option to Update from the Web, then you need to change one setting on your Window's Desktop.

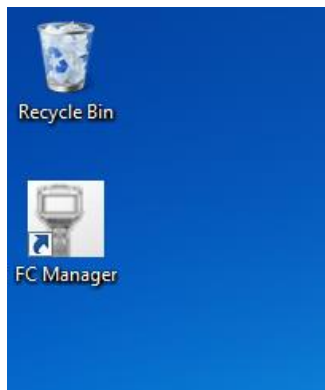


18. Exit **FC Manager**.

NOTICE

If you do not Exit FC Manager, the following steps do not take effect.

19. Minimize all windows on your Desktop and right-click the **FC Manager** shortcut, and then click **Properties**.



20.	<p><i>For customers with Windows 7 and 8 (and 8.1):</i></p> <ul style="list-style-type: none">a. Right-click the FC Manager shortcut, click Properties .b. Click the Shortcut tab and click Advanced.c. Select the Run as Administrator check box. <p><i>For customers with Windows 10:</i></p> <ul style="list-style-type: none">a. Open the Start menu and click All apps.b. Find the program you want to always run in administrator mode and right-click on the shortcut.c. Click file location. (native Windows 10 apps do not have this option). A File Explorer window opens with the location of the program.d. Right-click on the program and click Properties.e. In the Properties window, click the Shortcut tab and then click Advanced... button.f. Select the Run as administrator check box and click OK.
21.	Open the FC Manager window by double-clicking the icon on the desktop and select Update from the Web .

Explaining FC Manager Phrases:

Note: Read FC Manager Instructions for more information.

Manage Local Library	
Manage Local Library	<p>Clicking this option displays these three functions:</p> <ol style="list-style-type: none"> 1. Update from the Web 2. Updated from Selected Source 3. Delete Configuration Group <p>Note: The phrase Manage Local Library turns red to indicate you are out-of-date with the web.</p>
Local Library	<p>A local library is a location on your computer that collects:</p> <ul style="list-style-type: none"> • Configuration files, • DD files, and • System software files.
Update from the Web	<p>FC Manager checks the web site for new updates for system files and DD files and updates the computer if needed.</p>
Update from Selected Source	<p>You may want to update from a CD/DVD, USB Drive, or network drive instead of the internet.</p>
Delete Configuration Group	<p>You can delete configurations retrieved from the communicator but are now on your computer and are no longer useful.</p>
Manage Selected Communicator	
Manage Selected Communicator	<p>Clicking this option displays these four functions:</p> <ul style="list-style-type: none"> • Update Communicator from Local Library • Get Configurations from Communicator • Send Configurations to Communicator • Send Single HART® DD to Communicator
Update Communicator from Local Library	<p>This option compares HART® DD files and system software in the local library on your computer with the communicator. It then gives you the option to update either file type, or both.</p>
Get Configurations from Communicator	<p>You created these configurations on the selected communicator. This option retrieves all configurations from the communicator to the local library on your computer.</p>
Send Configurations to Communicator	<p>You can send a group of configurations to any selected communicator.</p>
Send Single HART® DD to Communicator	<p>You have the option to select one DD file to send to the communicator. You can send this DD file from any folder on CD/DVD, USB Drive, hard drive or network drive.</p>

Determine your system type

Windows 10

1. Click the **Start** menu button.
1. Click **Control Panel**.
2. Click the **System** icon.
3. Look for **System type**: 64-bit or 32 bit.

Or open **Settings**, click **System** icon, click **About**, look for **System type**: 64-bit or 32 bit

You are ready to return to step three (5): [Install the new FC Manager software](#).

Windows 8.1

1. Point to the lower-right corner of the screen, and then click **Search**.
2. Type *system* in the search box, and then click **Settings**.
3. Click **System**. Under the System heading, the system type displays:
 - a. 64-bit Operating System.
 - b. 32-bit Operating System.

You are ready to return to step three (5): [Install the new FC Manager software](#).

Windows 7 (or Windows Vista)

1. Click the **Start** button and click **Control Panel**.
2. Click **System**.
3. Look for **System type**: 64-bit or 32 bit.

You are ready to return to step three (5): [Install the new FC Manager software](#).